

MANA
VIJAYAWADA
MANA
SIRIS

AN IDENTITY DESIGNED FOR YOU

CREATE A NEW ECHELON IN SOCIETY

The city of dreams - an identity for Andhra Pradesh - is all set for an identity of its own with Vertex Siris Signa.

Vertex Homes is pleased to present for the who's who of Vijayawada, a premium residential address that will offer a whole new lifestyle experience. A living that has no equal, in elegance, in leisure, in stature. One that will complement all your top-of-the-class choices in life. One that will have you belong to a certain stature. Welcome to a place that will emerge being more than just your home. It will be your identity.

VERTEX SIRIS SIGNA

AS ENORMOUS AS YOUR ASPIRATIONS

Planned on a large tract of land, Vertex Siris Signa is blueprinted to be a magnanimous place of residence in the city of Vijayawada. Complete with top-notch standards of living, accompanying your lifestyle with amenities that will be aspired for, at a location that's a central landmark.

- › SIZE OF FLATS : 1345 SFT. TO 2275 SFT.
- › TYPE OF APARTMENT : 2 BHK & 3 BHK
- › NO. OF TOWERS : 3 PREMIUM TOWERS
- › CLUB HOUSE : DECKED WITH THE BEST



VISIT A **LIFE OF LEISURE** WHENEVER YOU **CHOOSE**

A residential community that aspires to be the best around its vicinity and even in the city for that matter should be complete with lifestyle amenities and leisure features that are premium, yet closer to you. Vertex Siris Signa ticks all boxes in that context.



AMENITIES

- Swimming Pool with Deck and Changing Rooms
- Multipurpose Hall
- Creche
- SPA
- Yoga/Meditation
- Cafeteria
- Children's Play Area
- Free Wifi Zone @ Club House

- 24 hours surveillance
- Piped-metered gas supply to all flats from Gas Bank
- 100% Power backup through generators
- Water Softening Plant
- AC Gymnasium
- Billiards, Table Tennis & Indoor Games
- Library
- Guest Rooms

SPECIFICATIONS

Structure	: RCC framed structure to withstand seismic loads	Kitchen	
Super Structure	: Red brick / solid cement concrete blocks masonry	Counter Top with Sink	: Granite top and SS sink drain board
Internal Walls	: 2 Coats cement plaster with putty for wall and single coat for ceiling	Dado	: Premium quality glazed ceramic dado
External Walls	: 2 Coats cement plaster for external walls and RCC members	Toilets	
Doors & Windows		Sanitary Fitting	: EWC with concealed flush tank of reputed make
Main Door Frame & Shutter	: Teak wood door frame / factory made (pre-hung) engineered door frame and shutter with melamine polish	CP Fitting	: All CP fittings are of reputed make
Internal Door with Shutter	: Factory made (pre-hung) engineered door frame and shutter with melamine polish	Geysers Points	: Provision for geysers points in all toilets
Windows and French Doors	: UPVC / Aluminium of reputed make	Mixer with Shower	: Hot and cold water mixer with shower of reputed make
Painting		Electrical Works	
Internal Wall and Ceiling	: 2 Coats of acrylic emulsion paint over putty finish	Wiring	: Concealed copper wiring in conduits for lights, fans and power plug points etc.
External Wall	: 2 Coats of exterior emulsion paint on textured surface	Power Outlets	: • Power outlets for air conditioners in all bedrooms and other identified areas • Power outlets for geysers in all bathrooms • Power plugs for all cooking appliances
Flooring		MCB	: MCB for each distribution board of reputed make
Rooms (Living, Dining, Drawing Room and Kitchen)	: 1m X 1m double charged vitrified tiles / Italian marble flooring	Fittings	: All electrical fittings are of reputed make
Master Bedroom	: Wooden flooring	Power Backup	: 100% power backup through generators
Other Bedroom	: Premium quality vitrified tiles	Telephone, Intercom, Broadband	
Corridor Flooring	: Vitrified tile flooring / granite flooring	Communication	: Telephone points, provision for internet connection, cable connection in master bedroom & living room
Staircase Flooring	: Tandoor flooring for fire staircase and granite / polished kota stone for public staircase	Security Systems	: 24 hrs surveillance system. CCTV cameras will be placed at designated areas Solar fencing throughout the boundary Intercom facility to each flat connecting to security.
Dadoing & Flooring in Toilets, Utility, Balcony		Water Supply System	: 24 hrs water supply by hydropneumatic system
Bathrooms (Dado & Flooring)	: Acid resistant, antiskid premium quality ceramic tiles for flooring and premium quality glazed ceramic dado	STP	
Utility Area	: Premium quality rustic finish ceramic tiles	Sewage Treatment	: A common STP is being provided for the Plant (STP) entire project
Balcony	: Premium quality rustic finish ceramic tiles	WTP	
Fabrication Works		Water Softening Plant (WTP)	: Portable water is made available through an exclusive water softening plant
Balcony Railing	: MS railing	Fire Fighting	: As per norms
		Gas Supply	: Piped metered gas supply to each flat
		Lifts	: Passenger and goods lift for each block



TYPICAL FLOOR PLAN BLOCK-A



TYPICAL FLOOR PLAN BLOCK-B



1965 Sft.



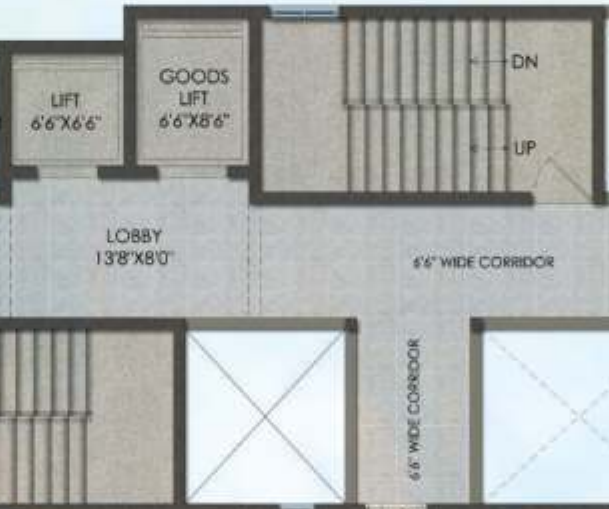
1745 Sft.



2145 Sft.



2275 Sft.



6'6" WIDE CORRIDOR

6'6" WIDE CORRIDOR

6'6" WIDE CORRIDOR

6'6" WIDE CORRIDOR



1425 Sft.



1965 Sft.





TYPICAL
FLOOR PLAN
 BLOCK-C



WHERE
EVERYBODY
 WANTS TO
BELONG TO



Location Map (not to scale)



Vertex Homes Pvt. Ltd.

Vijayawada Office: Flat No: 201,
 Sri Lakshmi Kalyan Complex,
 Road No. 01, Venkateshwara Nagar,
 Vijayawada - 520008. Ph: 0866-2452545.

Corporate Office: Vertex Corporate, 4th floor,
 Plot No. 08 & 09, Jubilee Enclave,
 Opp. HITEX Entrance, Madhapur,
 Hyderabad - 500081. Ph: 040-4849 9999.

ANDHRA PRADESH • TELANGANA

This is a conceptual presentation only and not a legal offering.

www.vertexhomes.com

Call: 9396 664 859
7093 784 567



OVER
20 years
 OF EXPERTISE IN
 CONSTRUCTION
 AND REAL ESTATE

