



# AMULYA GREEN LANDS

Inspired Living!



ONE DESTINATION.  
ENDLESS EXPERIENCES.

GATED COMMUNITY PREMIUM VILLAS  
@  
MAHANKAL, TUKKUGUDA





## ONE DESTINATION. ENDLESS DELIGHTS.

Spread over a massive 14.5-acre landscape and totalling 153 premium villas, kamala builders & developers invites you to **Amulya Green Lands**, that is soon to be one of Tukkuguda most premium residential addresses. You are invited to experience a high-life living at **Amulya Green Lands**.

AMULYA  
**GREEN  
LANDS**  
Inspired Living!

153 PREMIUM VILLAS

### LAYOUT PLAN





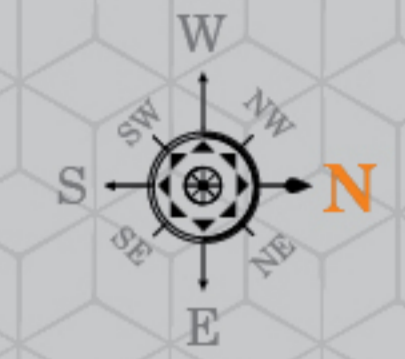


AMULYA  
GREEN  
LANDS  
Inspired Living!

EAST-FACING PLANS

Area Details

Plot Size.	Plot Size in Sq.Yds.	Ground Floor (Sft.)	First Floor (Sft.)	Second Floor (Sft.)	Total Floor Area (Sft.)
35'X55'	213.88	1,303	1,303	753	3,359



Ground Floor Plan



First Floor Plan



Second Floor Plan





# ONE DESTINATION. ENDLESS MOMENTS.

Life gives us many choices. Quite like that, even we are pleased to offer you choices at Amulya Green Lands. Both in terms of the direction your villa shall be and also in terms of the size of the area you would want to own. The villas is the east and west-facing variant that comes in two size-options of 3,359 sft, 3,215 sft. Which one's your pick?

## WEST-FACING PLANS

Area Details

Plot Size.	Plot Size in Sq.Yds.	Ground Floor (Sft.)	First Floor (Sft.)	Second Floor (Sft.)	Total Floor Area (Sft.)
35'X55'	213.88	1,247	1,247	721	3,215

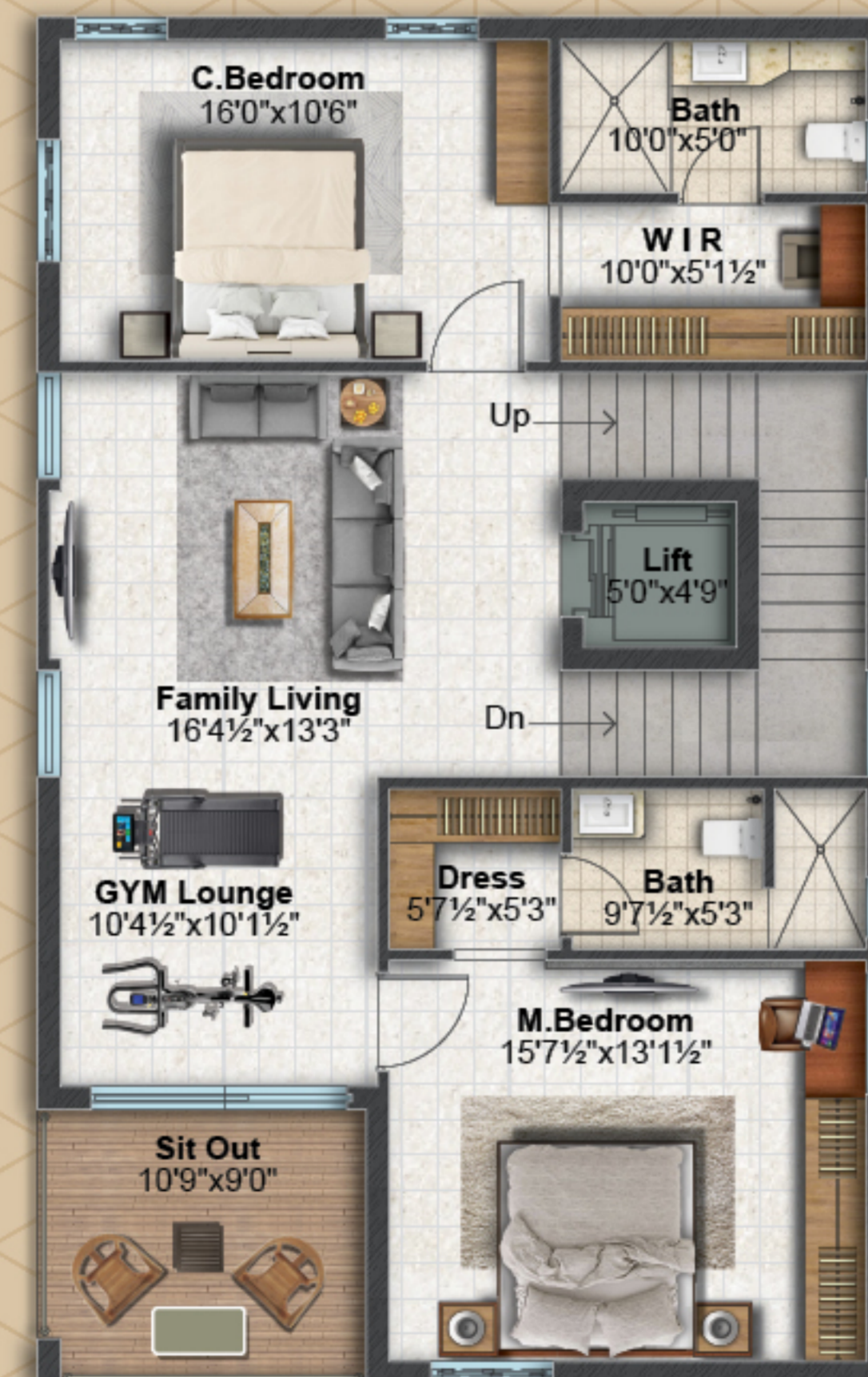


Ground Floor Plan

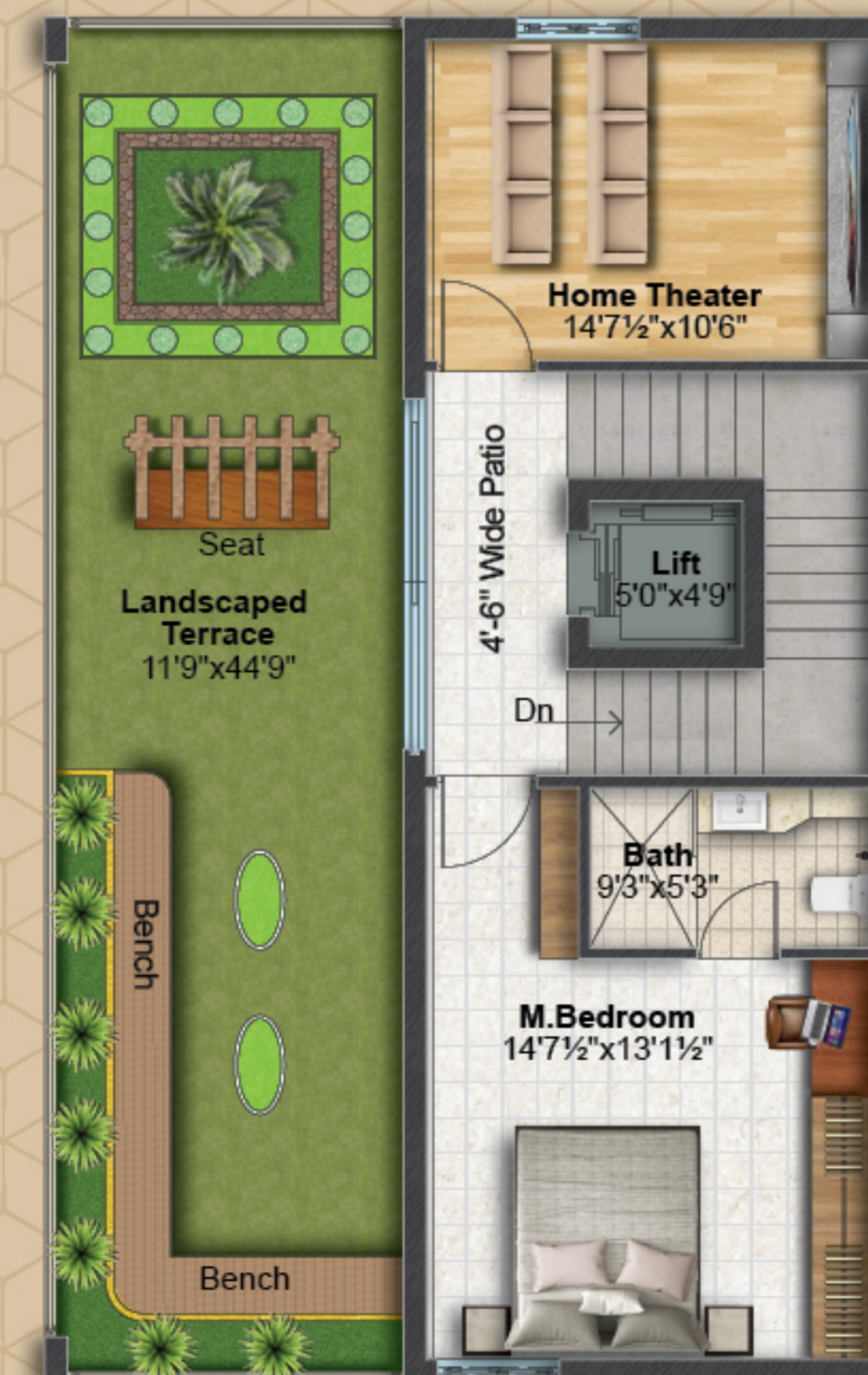


30'0" Wide Road

First Floor Plan



Second Floor Plan



West Villa View





Clubhouse View

AMULYA  
GREEN  
LANDS  
Inspired Living!

CLUBHOUSE PLANS

Area Details

Ground Floor (Sft.)	First Floor (Sft.)	Second Floor (Sft.)
3,805	3,590	3,805



Ground Floor Plan



First Floor Plan






Second Floor Plan





## SPECIFICATIONS

<p><b>STRUCTURE</b> G + 2, R.C.C. framed structure with M-20 Grade concrete, Fe 500 Grade TMT steel.</p>	<p><b>ELECTRICALS</b> Concealed copper wiring of standard make with branded modular switches. Inverter provision.</p>	<p><b>PAINTING</b> Two coats luppam finish and Emulsion paint for internal walls. External walls with texture finish, Asian paints ACE or equivalent.</p>
<p><b>WALLS</b> 9" thick Red brick masonry for external walls. 4" thick Red brick masonry for internal walls.</p>	<p><b>WATER SUPPLY</b> Adequate usage water supply through bore well.</p>	<p><b>PLUMBING</b> Ashirwad/Astral Flow Guardo or equivalent CPVC plumbing system with provision for solar geyser.</p>
		
<p><b>PLASTERING</b> External walls with double-coat sponge finish. Internal walls with single-coat sponge finish.</p>	<p><b>KITCHEN</b> Kitchen platform with 20 mm granite top and stainless steel sink. Glazed tiles dado up to 2' height above platform.</p>	<p><b>LIFT</b> 4 passenger capacity of stand make lift.</p>
<p><b>WINDOWS</b> UPVC 2.5 track windows with mosquito mesh and safety grills.</p>	<p><b>FLOORING</b> Vitrified tiles with 4" skirting of reputed brand for hall, dining, kitchen and bedrooms. Anti skid ceramic tile flooring for balconies and utility.</p>	<p><b>INTERCOM</b> Amongst all flats and security cabin.</p>
<p><b>DOORS</b> Teakwood frame and shutter for main door with brass fittings. All internal doors teakwood frames and designer molded skin shutters with brass fittings.</p>	<p><b>TOILETS</b> Anti-skid ceramic tile flooring with glazed tile dado up to 7' height. Glass partition in all bathrooms. All fittings of standard make with counter washbasin.</p>	<p><b>NOTE</b> Registration charges, GST and any other taxes applicable as per Government norms to be borne by customers only.</p>

## CLUBHOUSE AMENITIES



### GROUND FLOOR

- Banquet Hall with Dais
- Dining



### FIRST FLOOR

- Library
- Indoor Games
- Conference
- Creche



### SECOND FLOOR

- Gymnasium
- Meditation
- Yoga
- Guest Rooms

## ONE DESTINATION. ENDLESS VACATION.

How about living in a residential community where the amenities are awesome enough to double up as ones that you find only at resorts and holiday homes? Well, feel blessed for the fact that you won't have to travel outside the gates of **Amulya Green Lands**, because you will have lots to cherish and engage yourself, whenever you want. So much, that it'll feel like a vacation for sure.

AMULYA  
**GREEN  
LANDS**  
Inspired Living!



## AMENITIES & FEATURES

- Children's Cycling Track
- Landscaped gardens with avenue tree plantations
- Solar Fencing
- Children's Play Area
- Walking / Jogging Track
- 100% Vaastu
- Intercom Facility
- Swimming Pool with kids Pool
- CC Roads with LED Lighting
- Under Ground Cable
- Rainwater Harvesting Pits
- Sewage Treatment Plant
- Grand Entry with Security Post
- Security under 24hr CCTV Surveillance





## LOCATION PLAN

(not to scale)



## ONE DESTINATION. ENDLESS CONVENIENCE.

Quite like it should be, Amulya Green Lands is located in a locale that's all about solace and serenity. Take delight, as it is Opp. Outer Ring Road. More importantly, it isn't too far from high-technology production centres at Fab City. All in all, it offers amazing connectivity to the rest of Hyderabad and beyond. If you are a frequent road-traveller, it's located on Srisaillam Highway and towards Hyderabad.



SCAN TO LOCATION

Builders & Developers



Sy. Nos. 346 (p), 348 (p), 349(p),  
356 (p), 357 (p), 359 (p), 360 to 366(p),  
Mankhal (V), Tukuguda, Maheshwaram (M),  
Ranga Reddy District.  
Contact : 95057 83434, 95057 93434  
Email : greenlands@kamalabuilders.com  
Website : www.kamalabuilders.com



SCAN TO WEBSITE

Architects



**PR ASSOCIATES**  
ARCHITECTS & INTERIOR DESIGNERS

Anand Banjara Enclave,  
Road No.12, Banjara Hills,  
Hyderabad - 500 034.  
Tel:8977506789 / 9032573789  
8019767775

NOTE: This brochure is only a conceptual presentation of the project and not a legal offering. The promoters reserve the right to make changes in plans, specifications and elevation, as deemed fit.