

J E W E L



J E W E L

9701 247 536

1800 120 4105

(toll free number)





J E W E L

here are many variations of passages of Lorem Ipsum available, but the majority have suffered alteration in some form, by injected humour, or randomised words which don't look even slightly believable. If you are going to use a passage of Lorem Ipsum, you need to be sure there isn't anything embarrassing hidden in the middle of text. All the Lorem Ipsum generators on the Internet tend to repeat predefined chunks as necessary, making this the first true generator on the Internet.





Amenities

- 

Creche
- 

Gym / Aerobics
- 

Super market
- 

Banquet Hall
- 

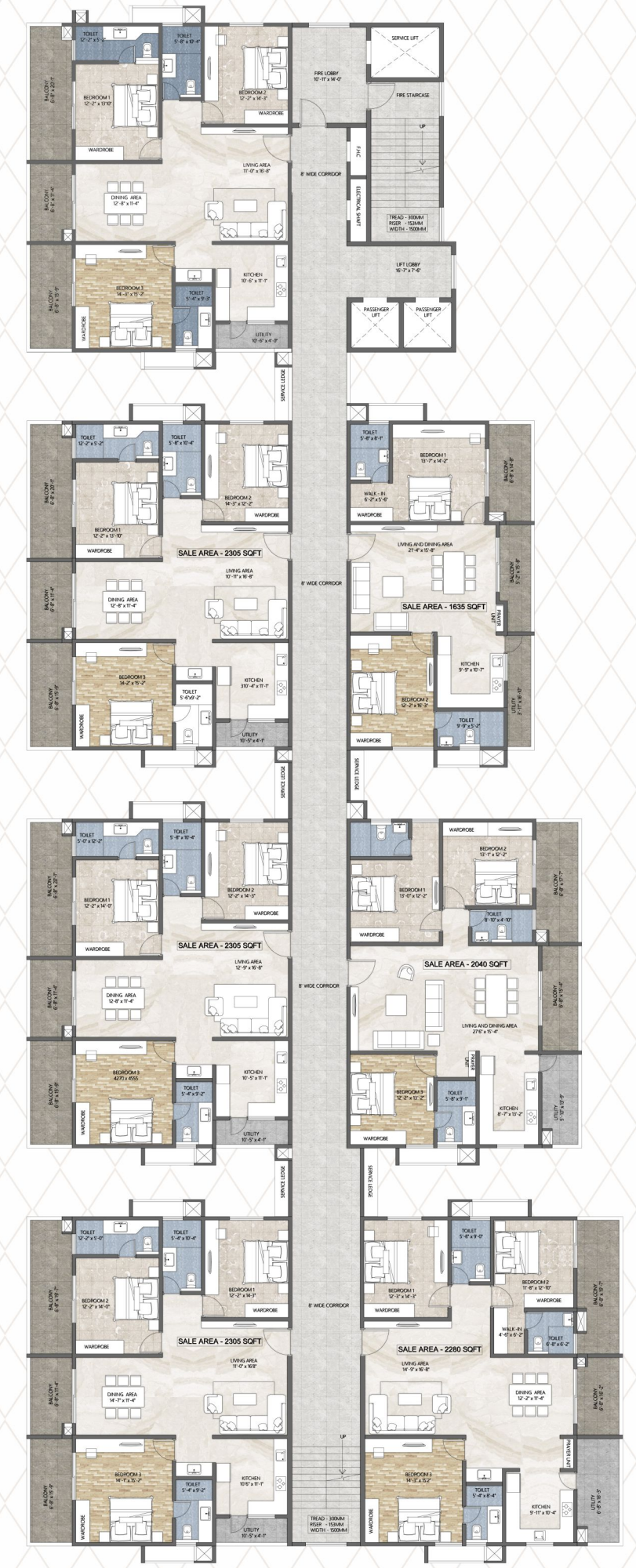
Indoor Games
- 

Elder's Seating Area
- 

Multi Purpose Court
- 

Children's Play Area
- 

Jogging Track





Amenities

- Gym / Aerobics
- Creche
- Super market
- Banquet Hall
- Indoor Games
- Elder's Seating Area
- Multi Purpose Court
- Children's Play Area
- Jogging Track

STRUCTURE

: Foundation & Structural Frame: R.C.C. Foundation & R.C.C Framed Structure.
 : Super Structure: Aluminum Formwork & Shear wall Technology.

DOORS / WINDOWS / VENTILATOR

Main Door : Modular wood frame with flush shutter fixed with reputed make SS hardware
 Internal Doors : Engineered doors fixed with reputed make SS hardware
 French Doors : UPVC sliding door with glass
 Windows : UPVC sliding doors with glass with provision for mesh shutter

PAINTING

Internal : Gypsum plastering/Smooth putty finish with two coats of premium acrylic emulsion paint of reputed make over a coat of primer
 External : Textured finish and two coats of weatherproof exterior emulsion paint of reputed make

FLOORING

Living / dining : 600x600 mm size vitrified tiles of reputed make
 Master bedroom : 600x600 mm size vitrified tiles of reputed make
 Other bedrooms : 600x600 mm size vitrified tiles of reputed make
 Kitchen : 600x600 mm size vitrified tiles of reputed make
 Staircase, Corridor's granite & Vitrified tiles of reputed make
 Bathrooms : Anti-skid tiles of reputed make

KITCHEN

Utility area : Polished granite platform with stainless steel sink
 : Provision for Dish washer and washing machine in the utility area
 : RO provision

BATHROOMS

: Wall hung wash basin / countertop
 : EWC with concealed flush valve of reputed make
 : Single lever fixtures with wall mixer cum shower
 : All C.P. fittings of reputed make
 : All sanitary wares of reputed make

DADOING

Kitchen : Ceramic tiles dado up to 2' height above kitchen platform
 Toilets : Well designed concept with designer tiles for walls and floor, and dadoing up to 7' height
 Utility : Glazed ceramic tiles up to 3' height near the wash area

ELECTRICAL

: Miniature circuit breakers (MCB) for each distribution board of reputed make.
 : Modular electrical switches of reputed make.
 : Concealed conduit wiring with copper cables in all rooms for light, fan and plug points.
 : Power points for indoor units of Air conditioner in living/dining and all rooms.
 : Sub meters for each apartment.

TELECOM / I-NET / CABLE TV

: Internet provision, DTH, telephone, intercom & video door phone

LIFTS

: High speed automatic passenger lifts with rescue device with V3F for energy efficiency of reputed make
 Dedicated lift for goods/ service

SECURITY, SURVEILLANCE

: CC cameras around the campus for surveillance

WTP & STP

: Water treated to potable water standards centrally.
 : Sewage treatment plant with filtration as per norms, treated sewage water will be used for landscaping and flushing purpose
 : Rainwater harvesting pits as per the norms for recharging ground water

GENERATOR

: Metering for each unit with auto mains failure feature

PARKING

: Every 3 BHK shall be allotted 2 car parking.

FIRE SAFETY

: Fire hydrant and fire sprinkler system in the basements as per the NOC Norms
 : Fire alarm and public address system on all floors and parking areas (basements). As per the NOC norms

WATER SUPPLY *

: Hydro-pneumatic system

CAR WASH FACILITY *

: Car Wash facility will be provided at the parking floor levels

FACILITY FOR DIFFERENTLY ABLED PEOPLE

: Access ramps at all entrances shall be provided for differently abled

